

SUBFRAME SPIDER™



PATENT PENDING



TECHNICAL MANUAL

SAFETY, INSTRUCTIONS AND WARRANTY

CUSTOMER SUPPORT: 805-482-6913 · SUPPORT@SUBFRAME-SPIDER.COM

SUBFRAME SPIDER

TM BY JIMS

TABLE OF CONTENTS

INTRODUCTION.....	2
MANUFACTURER INFORMATION.....	2
WARNING.....	3
COPYRIGHT.....	4
SPECIFICATIONS CHART.....	4
SPECIFICATION IMAGES.....	5
ASSEMBLY DRAWING AND REPLACEMENT PARTS.....	6
SAFETY.....	7
STORAGE.....	7
WARRANTY.....	7

INTRODUCTION

This manual contains instructions on the required maintenance and standard operation of the Subframe Spider™ by JIMS®. These instructions include pictures and drawings with technical details of the Part No. 5500-1000 Subframe Spider™ Handling Device. The full benefit of the long life and dependability of this unit can only be realized by proper operation and maintenance. All users and technicians should familiarize themselves thoroughly with the contents of this Technical Manual before operation, adjusting, or performing maintenance procedures on this device.

JIMS® provides the information, data, and recommendations contained in this manual solely as a customer service. All are believed to be accurate; however, JIMS® assumes no responsibility, implied or otherwise, for errors in, or for the application of the information, data, and recommendations presented herein. The right is reserved to make changes to this Technical Manual at any time, without obligation or warning.

MANUFACTURER INFORMATION

DESIGNED AND MADE IN THE U.S.A. - PATENT PENDING!



SUBFRAME SPIDER™

555 DAWSON DRIVE • CAMARILLO, CA 93012

PHONE: 805-482-6913 • EMAIL: SUPPORT@SUBFRAME-SPIDER.COM

[REGISTER YOUR SUBFRAME SPIDER™ FOR WARRANTY AT WWW.SUBFRAME-SPIDER.COM](http://WWW.SUBFRAME-SPIDER.COM)





DO NOT EXCEED
**2400 LB
CAPACITY!**

**SUBFRAME SPIDER™
WARNING!**

Study, understand, and follow all instructions before operating this subframe cradle device (Subframe Spider™). If the operator cannot read or understand this warning, the operating instructions and safety precautions, then they must be read and discussed in the operator's native language. Wear eye protection that meets the requirements of ANSI Z87.1 and OSHA standards. Before each use, inspect the subframe cradle device for damaged, loose, or missing parts. Immediately replace any damaged parts before operating. Do not modify this subframe cradle device. Only use attachments that are authentic and supplied by JIMS®. If a modification is needed, please contact JIMS® Customer Service. This subframe cradle device is designed to remove or install only automotive subframe assemblies. Using this subframe cradle device in a manner for which it is not designed may result in damage to equipment, vehicle, bodily injury or result in a fatality. The load must **not exceed the maximum rated capacity of 2,400 lbs.** For added safety, the subframe cradle device has ratcheting safety straps to secure the vehicle subframe to the cradle device. Stay out from underneath the load at all times. Be sure there are 4 points of contact with load at all times. Use the subframe cradle device on hard, level surfaces only.



**MADE IN THE U.S.A.
PATENT PENDING**

SUBFRAME SPIDER **WARNING**

1. **ONLY** AUTHORIZED, TRAINED, AND COMPETENT PERSONNEL SHALL OPERATE, MAINTAIN, AND REPAIR THIS DEVICE.
2. STUDY, UNDERSTAND, AND FOLLOW ALL INSTRUCTIONS & SAFETY PRECAUTIONS BEFORE OPERATING THIS DEVICE.
3. ADHERE TO ALL SAFETY WARNINGS AND OPERATIONAL GUIDELINES.
5. DO NOT EXCEED THE RATED MAXIMUM LOAD OF **2400 LBS.** FAILURE TO COMPLY WITH THIS WARNING COULD RESULT IN DAMAGE TO DEVICE, VEHICLE, BODILY INJURY OR RESULT IN A FATALITY.
6. USE ONLY ON HARD AND LEVEL SURFACES.
7. ALWAYS CENTER LOAD ON ALL FOUR SADDLES.
8. ALWAYS SECURE LOAD WITH SAFETY STRAPS.
8. ALWAYS WEAR EYE PROTECTION THAT MEETS THE REQUIREMENTS OF ANSI Z87.1 AND OSHA STANDARDS.
9. POSITIONING THE SUBFRAME SPIDER™ DEVICE IS VERY IMPORTANT. ONLY TRAINED TECHNICIANS SHOULD POSITION THE SUBFRAME SPIDER UNDER THE VEHICLE WHILE THE VEHICLE IS IN ON A LIFT/HOIST.
10. DO **NOT** REMOVE HINGE BOLTS, ALIGNMENT PINS, OR STOP BOLTS WHILE UNDER LOAD.
11. DO **NOT** ATTEMPT TO ROTATE SUPPORT LEGS WHILE UNDER LOAD.
12. ENGAGE ALL CASTER BRAKES ON DEVICE WHEN LOADING AND UNLOADING.
13. REMOVE LOAD BEFORE CHANGING, ADJUSTING, MAKING REPAIRS, OR LUBRICATING THIS DEVICE.
14. KEEP ALL PARTS OF THE BODY AND CLOTHING AWAY FROM ANY MOVING PARTS AND PINCH POINTS.
15. BECAUSE OF POTENTIAL HAZARDS ASSOCIATED WITH THIS TYPE OF DEVICE, **NO ALTERATIONS SHALL BE MADE TO THE PRODUCT.**
16. ONLY ATTACHMENTS AND/OR ADAPTERS SUPPLIED BY JIMS® SHALL BE USED.
17. FAILURE TO COMPLY WITH THIS WARNING COULD RESULT IN PERSONAL INJURY AND EQUIPMENT DAMAGE!

DO NOT OPERATE WHEN ANY COMPONENTS ARE MISSING. KEEP HANDS CLEAR OF PINCH POINTS. ALWAYS MAINTAIN 4 POINTS OF CONTACT WITH SUPPORT LEGS WHILE UNDER LOAD. FAILURE TO COMPLY WITH THIS WARNING MAY CAUSE SERIOUS BODILY HARM, OR DEATH.

SUPPORT LEGS MUST BE PROPERLY POSITIONED UNDER THE VEHICLE MANUFACTURER'S RECOMMENDED CONTACT POINTS BEFORE BEING PUT UNDER LOAD. CONTACT POINTS MUST BE CENTERED ON TOP OF SADDLES. FAILURE TO COMPLY WITH THIS WARNING MAY CAUSE SERIOUS BODILY HARM, OR DEATH.

**REGISTER YOUR SUBFRAME SPIDER™ FOR WARRANTY AT
WWW.SUBFRAME-SPIDER.COM**



COPYRIGHT

Copyright © 2024 JIMS® all rights reserved. This document is the property of JIMS® and is supplied as reference information for users of our products. This document and the contents within are considered confidential information, not to be disclosed, copied, transmitted, transcribed in any form, or stored on any type of data storage media without the express written consent of JIMS®.

JIMS® has made every effort to ensure the information contained in this document is accurate and current. This Technical Manual is intended to provide device operation and safety instructions for your device. However, JIMS® does not warrant or guarantee that the information is either complete or accurate in every respect and the user of the Technical Manual should consult with a JIMS® customer support representative for any clarifications and updates.

The user of the Technical Manual shall protect, indemnify, and hold harmless JIMS® and its directors, officers, employees, and agents from and against all liability for personal injury, death, or property damage resulting directly or indirectly from the use of the information contained in this Technical Manual.

Observance of all descriptions, information and instructions set out in this Technical Manual is the full responsibility of the user. This Technical Manual is intended for guidance and informational purposes and must be used in association with adequate training and on-the job supervision to provide safe and effective device use.

It is the responsibility of the user or technician to conform to all regulations and requirements issued by an authority or agency which may affect the operation, safety or equipment integrity, that may overrule the content of this documentation. The user or technician will acknowledge and obey any general legal or other mandatory regulation in force relating to accident prevention, safety, and device integrity.



*Safety Straps Not Engaged
For Marketing Image ONLY.*

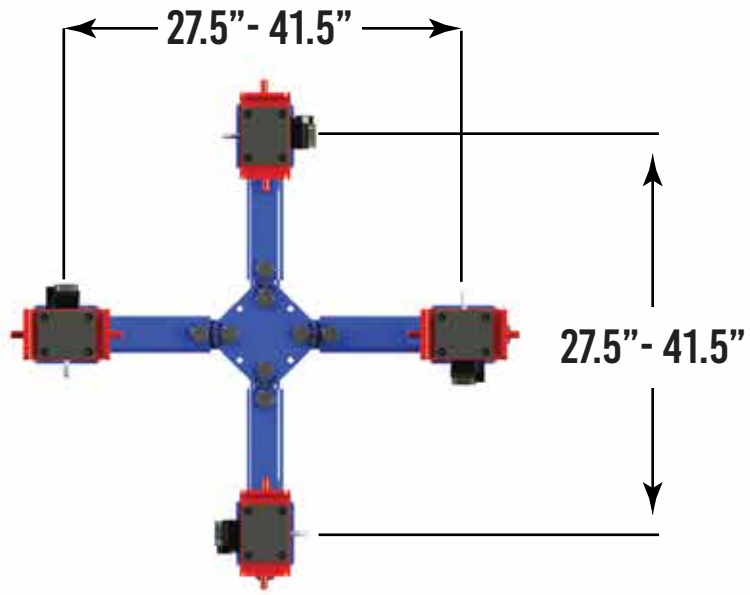


SPECIFICATIONS

ITEM	DESCRIPTION
MAXIMUM LOAD RATING	2,400 LBS (1089 kg)
MAXIMUM REACH BETWEEN SUPPORT LEGS	41.5" (105 cm)
MINIMUM REACH BETWEEN SUPPORT LEGS	27.5" (70 cm)
LEAD SCREW STROKE	6.5" (16.5 cm)
MAXIMUM HEIGHT	30" (76 cm)
MINIMUM HEIGHT	23.5" (59 cm)
WEIGHT	135 LBS (61 kg)

SPECIFICATIONS

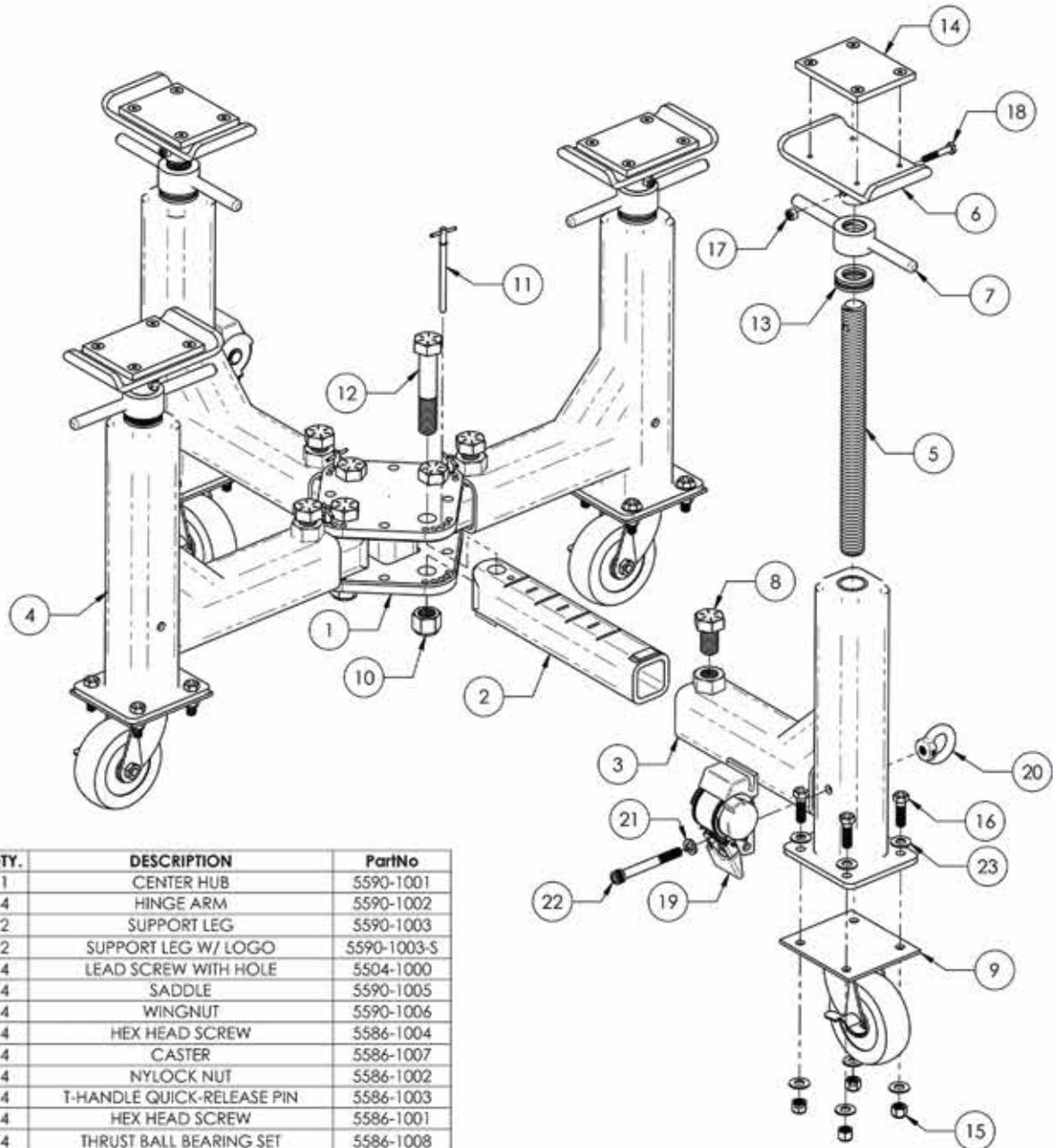
RANGE OF WIDTH



RANGE OF HEIGHT



ASSEMBLY DRAWING REPLACEMENT PARTS



NO.	QTY.	DESCRIPTION	PartNo
1	1	CENTER HUB	5590-1001
2	4	HINGE ARM	5590-1002
3	2	SUPPORT LEG	5590-1003
4	2	SUPPORT LEG W/ LOGO	5590-1003-S
5	4	LEAD SCREW WITH HOLE	5504-1000
6	4	SADDLE	5590-1005
7	4	WINGNUT	5590-1006
8	4	HEX HEAD SCREW	5586-1004
9	4	CASTER	5586-1007
10	4	NYLOCK NUT	5586-1002
11	4	T-HANDLE QUICK-RELEASE PIN	5586-1003
12	4	HEX HEAD SCREW	5586-1001
13	4	THRUST BALL BEARING SET	5586-1008
14	4	SADDLE PAD WITH SCREWS	5586-1010
15	16	NYLOCK NUT	5586-1006
16	16	HEX HEAD SCREW	5586-1005
17	4	NYLOCK NUT	5586-1013
18	4	HEX HEAD SCREW	5586-1014
19	2	RETRACTABLE SAFETY RATCHET STRAP	5586-1018
20	2	ROUND EYE NUT	5586-1019
21	2	SPLIT LOCK WASHER	5586-1021
22	2	SOCKET HEAD CAP SCREW	5586-1022
23	32	FLAT WASHER	2031
24	2	WARNING STICKER	5586-1023
25	1	INSTRUCTION SHEET	5500-1000-IS

DESIGN: 3, HAYCOX	DATE: 02/01/24	JIMS 100 Industrial Park, Covington, CA 94626	
DESIGNED BY:		SUBFRAME SPIDER	
REVISED BY:		REV: B	REVISED TO: 5500-1000
APPROVED BY:		ISSUED: 1-10-2024	ISSUED TO: 0





SAFETY

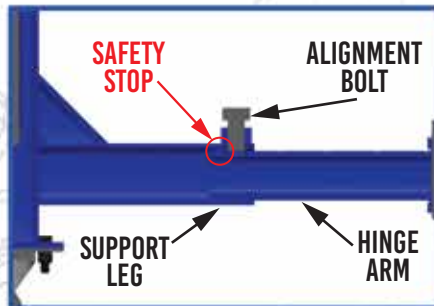
The Subframe Spider™ device was designed specifically with the repair technician's safety in mind. Each Subframe Spider™ shall be inspected immediately if the device is believed to have been subjected to an abnormal load or shock. It is recommended that this inspection be made by a JIMS® authorized repair facility.

It is recommended that an annual inspection of the Subframe Spider™ device be made by a JIMS® authorized repair facility and that any defective parts, decals, or safety labels or signs be replaced with JIMS® specified parts.

Any Subframe Spider™ device that appears to be damaged in any way, is found to be worn, or operates abnormally **SHALL BE REMOVED FROM SERVICE UNTIL REPAIRED**. It is recommended that necessary repairs be made by a JIMS® authorized repair facility, if repairs are permitted by JIMS®.

The Subframe Spider™ device is constructed from high strength structural grade steel. The lead screws were chosen for their high load rating and overall shear strength. Safety stops located on the end of the hinge arms prevent the support legs from detaching from the device and falling on a user or technician's foot.

SAFETY STOP & STRAPS



BUILT-IN SAFETY STRAPS

EASY COMPACT STORAGE



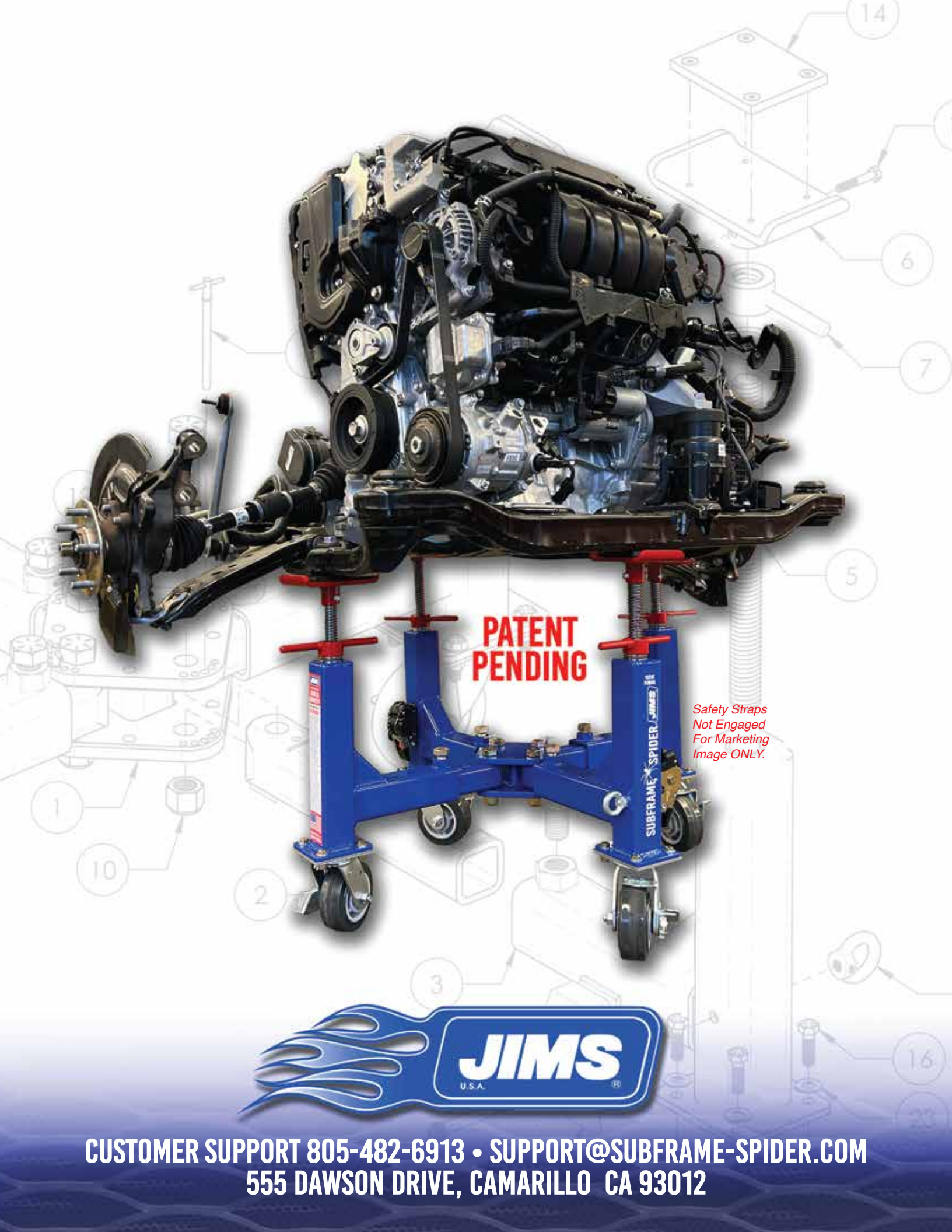
1 YEAR WARRANTY

REGISTER YOUR SUBFRAME SPIDER™ FOR WARRANTY AT WWW.SUBFRAME-SPIDER.COM

CUSTOMER SUPPORT: 805-482-6913

7

SUPPORT@SUBFRAME-SPIDER.COM



**PATENT
PENDING**

*Safety Straps
Not Engaged
For Marketing
Image ONLY.*



**CUSTOMER SUPPORT 805-482-6913 • SUPPORT@SUBFRAME-SPIDER.COM
555 DAWSON DRIVE, CAMARILLO CA 93012**